

## NEBRASKA CHILDREN AND FAMILIES FOUNDATION COMMUNITIES FOR KIDS INITIATIVE

The Communities for Kids initiative was created in response to community requests for assistance with shortages of high-quality early care and education programs – shortages that both impact children's optimal development and pose a challenge for communities hoping to attract and retain the viable workforces they need to thrive.

Communities for Kids partners with public and private entities to support and coordinate planning for access to high-quality care and education for all children birth through age five. These partnerships are customized to address each community's unique assets and needs – so each community can grow and prosper well into the future.

Nebraska Children and Families Foundation provides expertise and coordination, supporting communities using a collective impact approach to:

**ENGAGE** stakeholders in identifying the strengths and gaps of the current early care and education resources in the community by completing a detailed Child Care Landscape Study, including the Early Childhood Quality and Capacity Survey. Engaging providers, families, schools, businesses, economic development and community organizations is an important part of this work.

**UTILIZE** informed data-driven decision-making to determine strategies and desired outcomes most relevant to meeting the priority needs identified in the community assessment and detailing a business plan when indicated. Key messaging materials, mission, and vision using local data and perspectives are developed.

**CONNECT** communities with resources, including peer networks, research, best practice, implementing quality measures, financing, use of government/public funding, and physical environment designs.

### Communities for Kids Partners:

#### COHORT 1

Columbus, Gothenburg, Grand Island, Lexington, Norfolk, Pender, Red Cloud, Schuyler, York County

#### COHORT 2

Albion/Boone Co., Broken Bow/Custer Co., Nebraska City/Otoe Co., North Platte, Ogallala/Keith Co., Stuart/Holt Co., Tecumseh/Johnson Co., Valentine/Cherry Co., Wood River

#### COHORT 3

Adams Co., Ainsworth/Brown Co., Atkinson/Holt Co., Burwell/Garfield Co., Gering, City of Lincoln, Garden Co., McCook/Red Willow Co., Ord/Valley Co., Wilcox-Hildreth

#### COHORT 4

Ashland-Greenwood Area, Bertrand Area, Buffalo Co., Cheyenne Co., Dodge Co., Douglas Co., Gage Co., GCC/Dakota Co., Giltner, Nemaha Co., O'Neill/Holt Co., Overton, Pawnee Co.

#### COHORT 5

Bayard, Cedar Co., Kimball Co., St. Paul, Seward Co., Sherman Co., Spalding

#### COHORT 6

Cambridge, Central City, Clay Co., Eustis, Falls City, Holdrege, Stanton, Wisner-Pilger, Wheeler Co

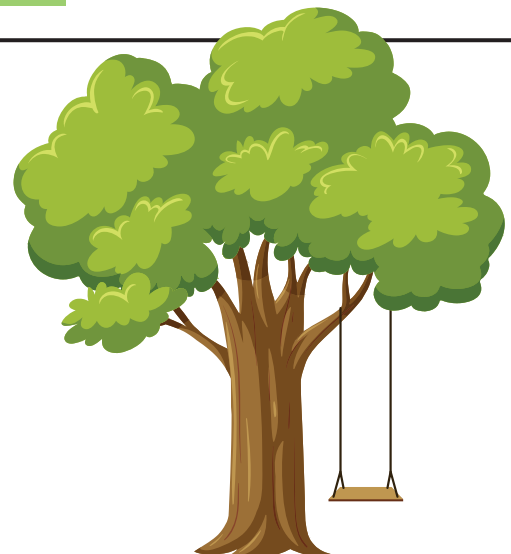
#### COHORT 7

Bancroft-Rosalie, Blue Hill, Box Butte, Elm Creek, Friend, Hampton, Minden, Pierce Co., Thayer Co., Thedford/Thomas Co.,

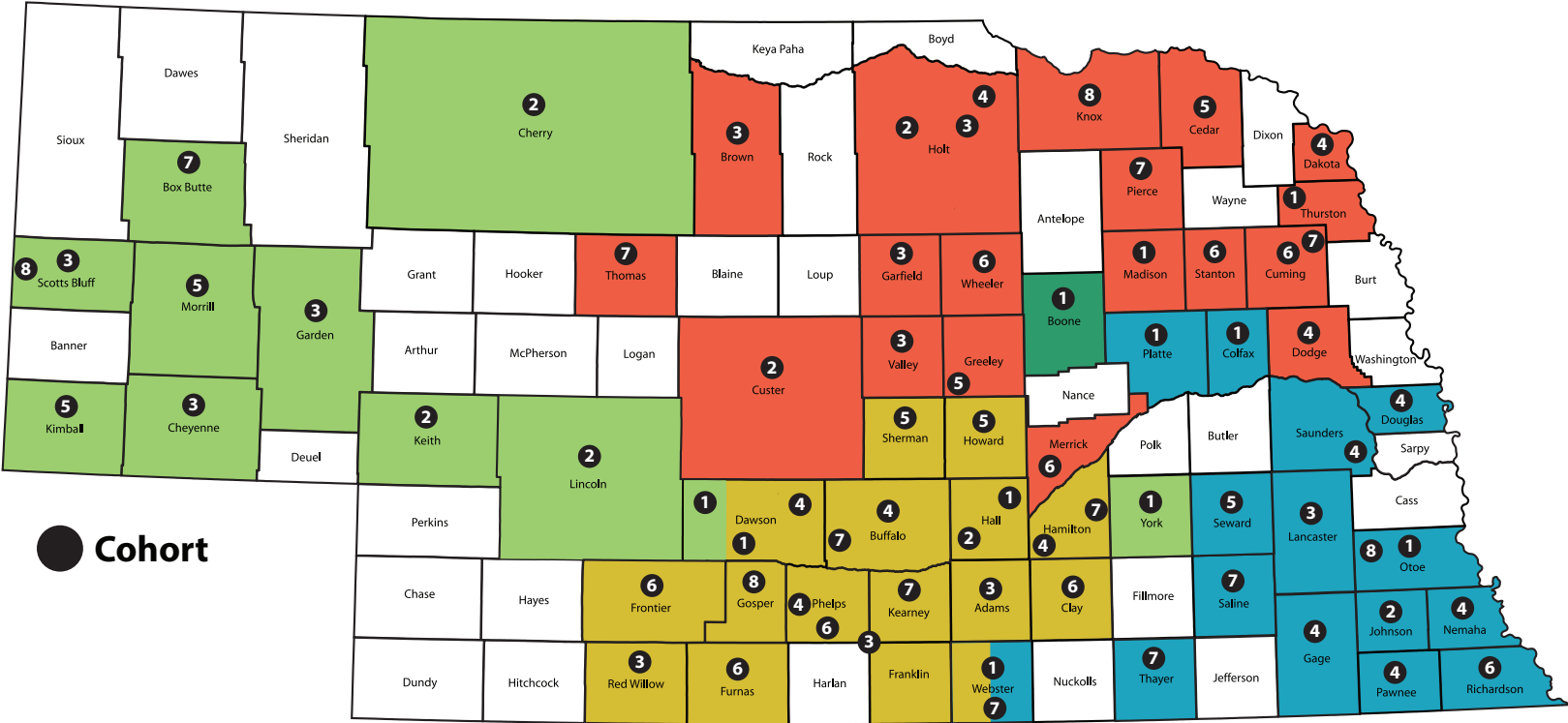
#### COHORT 8

Bennet-Palmyra, Elwood Area, Morrill, Wausa

For more information about Communities for Kids, please visit the website at [www.communitiesforkids.org](http://www.communitiesforkids.org) or contact is at [C4Kinfo@nebraskachildren.org](mailto:C4Kinfo@nebraskachildren.org).



# Communities for Kids Growth Map



## Communities for Kids Staff



Marti Beard  
mbeard@nebraskachildren.org  
402.310.7251



Katrina Hurley  
khurley@nebraskachildren.org  
402.853.2518



Rachel Sissel  
rsissel@nebraskachildren.org  
308.874.6190



Shonna Werth  
swerth@nebraskachildren.org  
308.785.8192



Melissa Polinoski  
mpolinoski@nebraskachildren.org  
402.340.8182